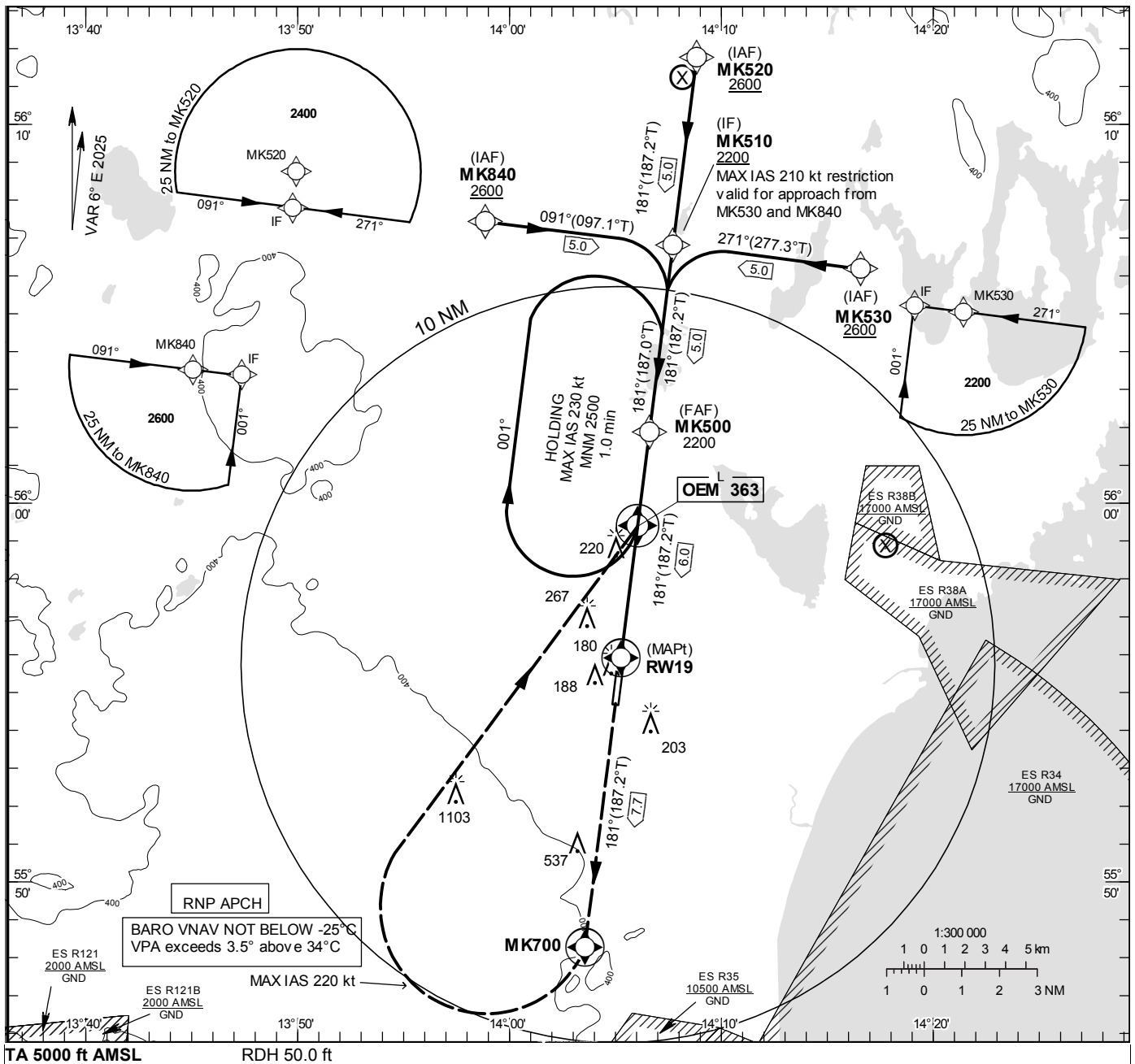
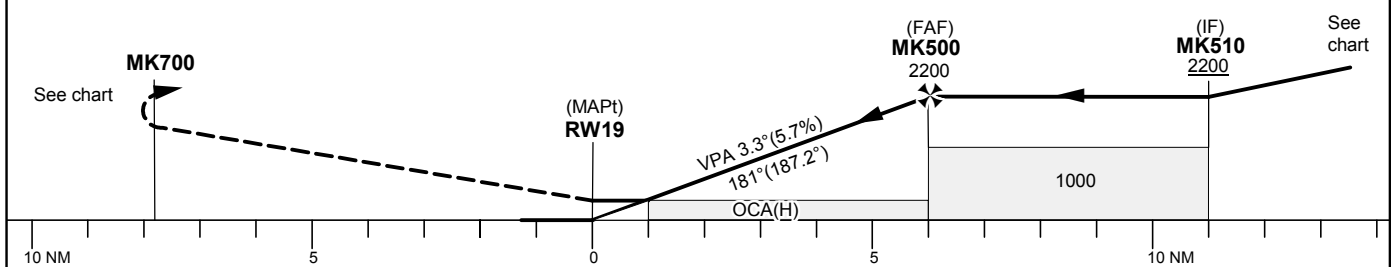


KRISTIANSTAD**RNP RWY 19**

EGNOS Ch 60050 E 19A

**INSTRUMENT
APPROACH
CHART – ICAO****THR ELEV 73.8 ft, AD ELEV 77 ft**OCH are related to THR.
BRG are MAG (True).
ALT, HGT and ELEV in ft.**KRISTIANSTAD TOWER 129.355**CLIMB TO MK700, TURN RIGHT (MAX IAS 220 kt)
AND CONTINUE CLIMB TO 2500 TO HOLD AT OEM.

OCA (H)					Final approach		Distance FAF-MAPt 6.0 NM				
Cat of ACFT	A	B	C	D	Dist to RWY 19		2	3	4	5	
LPV	314 (241)	326 (253)	334 (261)	344 (271)	ALT		810	1160	1500	1850	
LNAV/VNAV	314 (241)	326 (253)	334 (261)	352 (279)	GS	kt	80	100	120	140	160
LNAV	470 (400)				Rate of descent	ft/min	460	575	690	805	920
Circling	570(500)	570(500)	940(870)	1500(1430)							1035
Circling E RWY	500(430)	570(500)	940(870)	940(870)							

CHANGE: Editorial

KRISTIANSTAD

RNP RWY 19 via MK520

Path Desc	Waypoint Identifier	Fly-over	Course °M(°T)	Dist (NM)	Turn Dir	Altitude	Speed	VPA/ RDH	Rec Navaid	Navigation Specification
IF	MK520	-	-	-	-	+2600	-	-	-	RNP APCH
TF	MK510	-	181 ⁰ (187.2 ⁰)	5.0	-	+2200	-	-	-	RNP APCH

RNP RWY 19 via MK840

Path Desc	Waypoint Identifier	Fly-over	Course °M(°T)	Dist (NM)	Turn Dir	Altitude	Speed	VPA/ RDH	Rec Navaid	Navigation Specification
IF	MK840	-	-	-	-	+2600	-	-	-	RNP APCH
TF	MK510	-	091 ⁰ (097.1 ⁰)	5.0	-	+2200	-210	-	-	RNP APCH

RNP RWY 19 via MK530

Path Desc	Waypoint Identifier	Fly-over	Course °M(°T)	Dist (NM)	Turn Dir	Altitude	Speed	VPA/ RDH	Rec Navaid	Navigation Specification
IF	MK530	-	-	-	-	+2600	-	-	-	RNP APCH
TF	MK510	-	271 ⁰ (277.3 ⁰)	5.0	-	+2200	-210	-	-	RNP APCH

Path Desc	Waypoint Identifier	Fly-over	Course °M(°T)	Dist (NM)	Turn Dir	Altitude	Speed	VPA/ RDH	Rec Navaid	Navigation Specification
IF	MK510	-	-	-	-	+2200	-	-	-	RNP APCH
TF	MK500	-	181 ⁰ (187.2 ⁰)	5.0	-	+2200	-	-	-	RNP APCH
TF	RW19	Y	181 ⁰ (187.2 ⁰)	6.0	-	@124	-	-3.25/50	-	RNP APCH
TF	MK700	Y	181 ⁰ (187.2 ⁰)	7.7	-	-	-	-	-	RNP APCH
DF	OEM	Y	-	-	R	+2500	-220	-	-	RNP APCH

Path Desc	Waypoint Identifier	Fly-over	Course °M(°T)	Dist (NM)	Turn Dir	Altitude	Speed	VPA/ RDH	Rec Navaid	Navigation Specification
HM	OEM	Y	181 ⁰ (187.0 ⁰)	-	R	+2500	-230	-	-	RNAV 1

FAS Data Block

RNP RWY 19

Input data

Operation Type	0
SBAS Provider	1 (EGNOS)
Airport Identifier	ESMK
Runway	19
Runway Letter	0 (None)
Approach Performance Designator	0
Route Indicator	
Reference Path Data Selector	0
Reference Path Identifier	E19A
LTP/FTP Latitude	555553.5990N
LTP/FTP Longitude	0140515.8620E
LTP/FTP Ellipsoidal Height (metres)	57.3
FPAP Latitude	555439.3855N
Delta FPAP Latitude (seconds)	-74.2135
FPAP Longitude	0140459.2800E
Delta FPAP Longitude (seconds)	-16.5820
Threshold Crossing Height	50.0
TCH Units Selector	0 (feet)
Glidepath Angle (degrees)	3.25
Course Width (metres)	105.00
Length Offset (metres)	96
HAL (metres)	40.0
VAL (metres)	50.0

Output data

Data Block	10 0B 0D 13 05 13 00 00 01 39 31 05 FE D2 00 18 AC B9 0B 06 3D 16 35 BC FD 74 7E FF F4 01 45 01 64 0C C8 FA 37 9C F4 ED
Calculated CRC Value	379CF4ED

Required Additional Data

ICAO Code	ES
LTP/FTP Orthometric Height (metres)	22.5